

Zoku Max



PRODUCT TYPE: 7mm coloured body porcelain slab

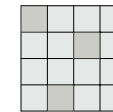
COLOURS: Pale Silver, Silver, Corten and Iron

SIZES: 1200x1200mm, 1200x2400mm and
1600x3200x6mm
Rectified edges

FINISHES/USAGE: Natural/Wall and Floor

AESTHETIC QUALITIES: Metal look slabs

VARIATION:



V3

Made in Italy, ZOKU MAX is the latest series to offer a metallic surface finish in large format slabs. Available in four colours and three versatile sizes ZOKU MAX can be used as a decorative solution for floors and walls in commercial and residential spaces, including the exterior facades of buildings.

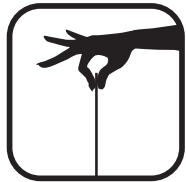
Zoku Max

TECHNICAL QUALITIES

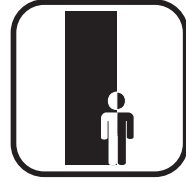
Slim porcelain slabs allowing endless custom design opportunities such as joinery cladding, internal and external facades.



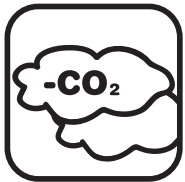
Resistant to stain/
chemical agents



Slab only 7mm thick



Record dimensions,
up to 1600x3200mm



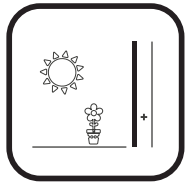
New eco-friendly technology



To easily renovate floors and walls



indoor floors/walls



glued and ventilated
exterior facades



bathroom/kitchen
shelves



interior furnishings



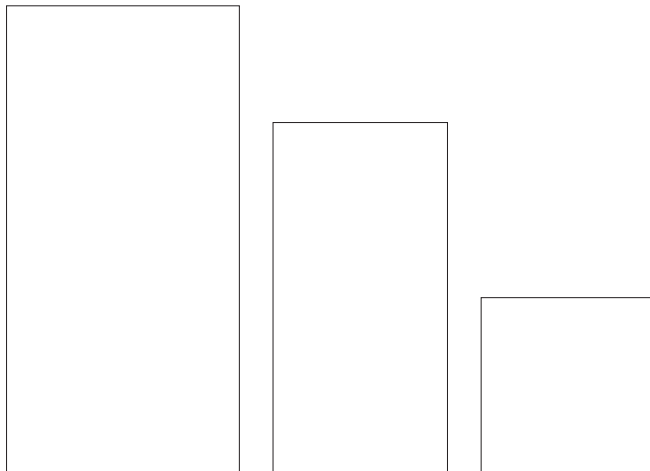
Zoku Max

PRODUCT SPECIFICATIONS

SIZES	FINISHES	SLIP RATING	TILE EDGE
1200x1200mm*	NATURAL	-	RECTIFIED
1200x2400mm	NATURAL	-	RECTIFIED
1600x3200mm*	NATURAL	-	RECTIFIED

*Indent item - Subject to stock availability overseas, please allow 10-12 weeks lead time from date of order confirmation. Minimum quantity may apply.

FORMATS



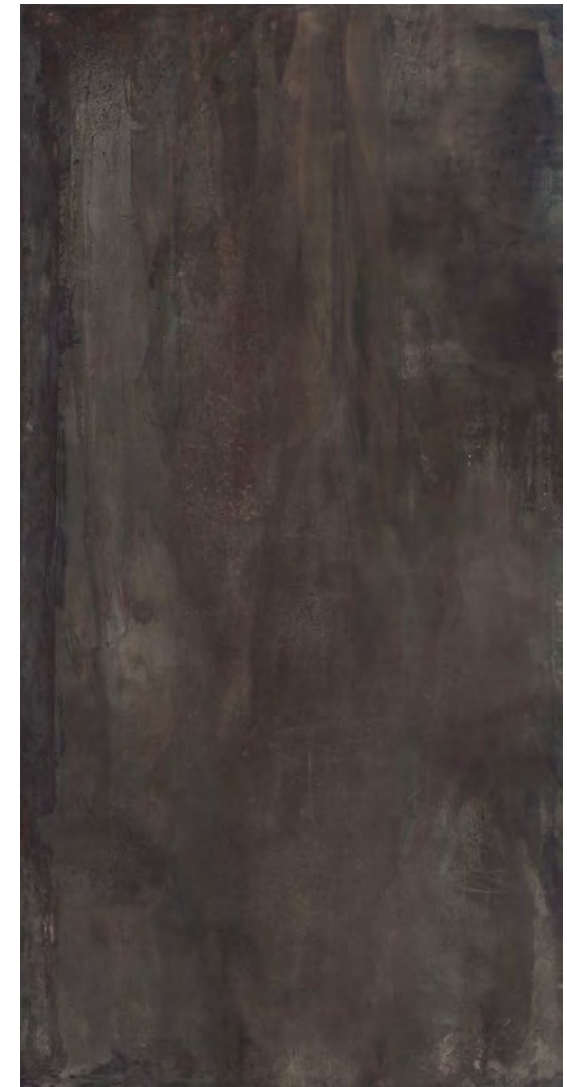
1600x3200x6mm

1200x2400mm

1200x1200mm



PALE SILVER NATURAL



IRON NATURAL

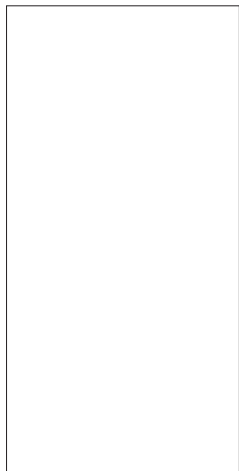
Zoku Max

PRODUCT SPECIFICATIONS

SIZES	FINISHES	SLIP RATING	TILE EDGE
1200x1200mm*	NATURAL	-	RECTIFIED
1200x2400mm*	NATURAL	-	RECTIFIED
1600x3200mm*	NATURAL	-	RECTIFIED

*Indent item - Subject to stock availability overseas, please allow 10-12 weeks lead time from date of order confirmation. Minimum quantity may apply.

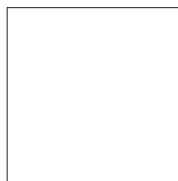
FORMATS



1600x3200x6mm



1200x2400mm



1200x1200mm



SILVER NATURAL



CORTEN NATURAL

Zoku Max

TECHNICAL SPECIFICATIONS

Technical Characteristic	Test Standard	Product Standard	Result
Length and Width	ISO 10545-2+	$\pm 0,6\%$ ($\pm 2\text{mm}$)	Complies
Thickness	ISO 10545-2	$\pm 0,5\%$ ($\pm 5\text{mm}$)	Complies
Straightness of sides	ISO 10545-2	$\pm 0,5\%$ ($\pm 1,5\text{mm}$)	Complies
Rectangularity	ISO 10545-2	$\pm 0,5\%$ ($\pm 2\text{mm}$)	Complies
Water Absorption	ISO 10545-3	Eb 0,5%	Eb 0,3%
Breaking Strength	ISO 10545-4	min 1300	>1500
Modulus of Rupture	ISO 10545-4	min 35	45
Warp	ISO 10545-2	Deviation % Max $\pm 0,5$	Complies
Thermal Shock	ISO 10545-9	Test method available	Resistant
Frost Resistance	ISO 10545-12	Required	Resistant
Resistance to household chemicals	ISO 10545-13	min GB	min GA

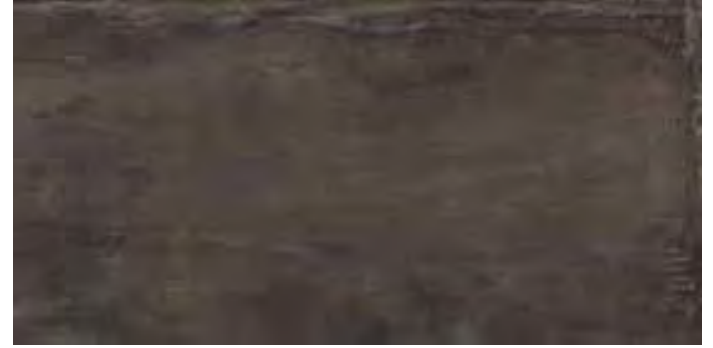
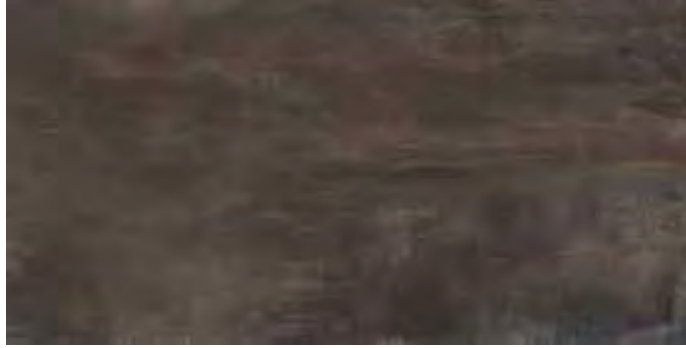
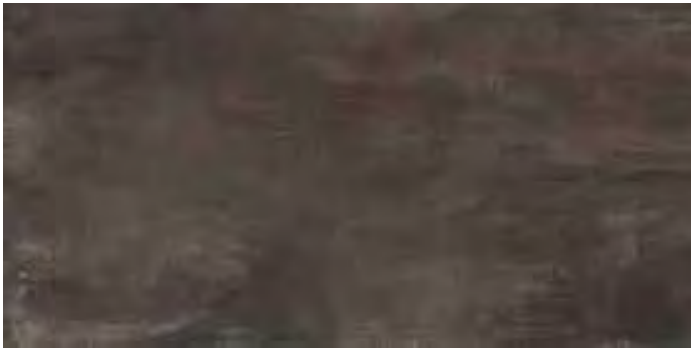
Zoku Max

VARIATION - PALE SILVER



Zoku Max

VARIATION - IRON



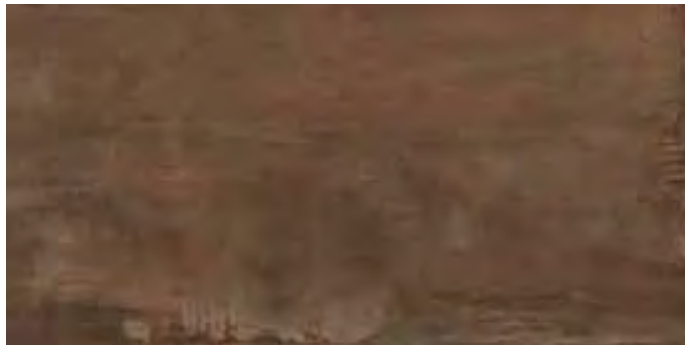
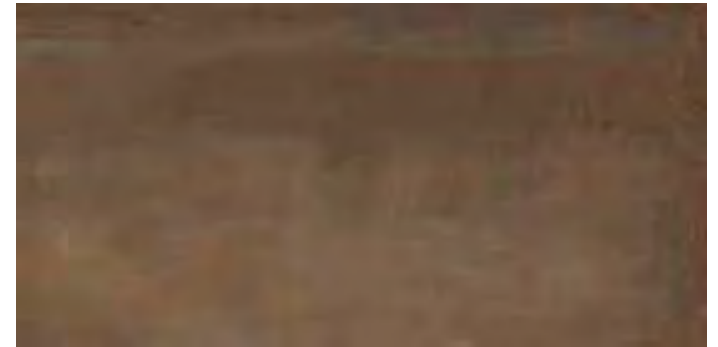
Zoku Max

VARIATION - SILVER



Zoku Max

VARIATION - CORTEN



Zoku Max



Zoku Max



Zoku Max



Zoku Max

