

Diamond



PRODUCT TYPE: Glazed Porcelain

COLOURS: White, Blue, Soft Grey, Charcoal and Black

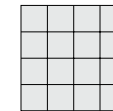
SIZES: 152x263mm
Non-Rectified

FINISHES/USAGE: Gloss/Wall ONLY

AESTHETIC QUALITIES: Geometric, chevron, rhombus

ORIGIN: Spain

VARIATION:



V1

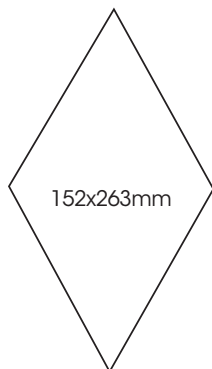
DIAMOND our new rhombus tile and comes in five neutral colours. Combine a combination of colours and flip and rotate to create unique and stunning patterns.

Diamond

PRODUCT SPECIFICATIONS

SIZES	FINISHES	TILE EDGE
152x263mm	GLOSS	NON-RECTIFIED

FORMATS



White Gloss



Soft Grey Gloss



Charcoal Gloss



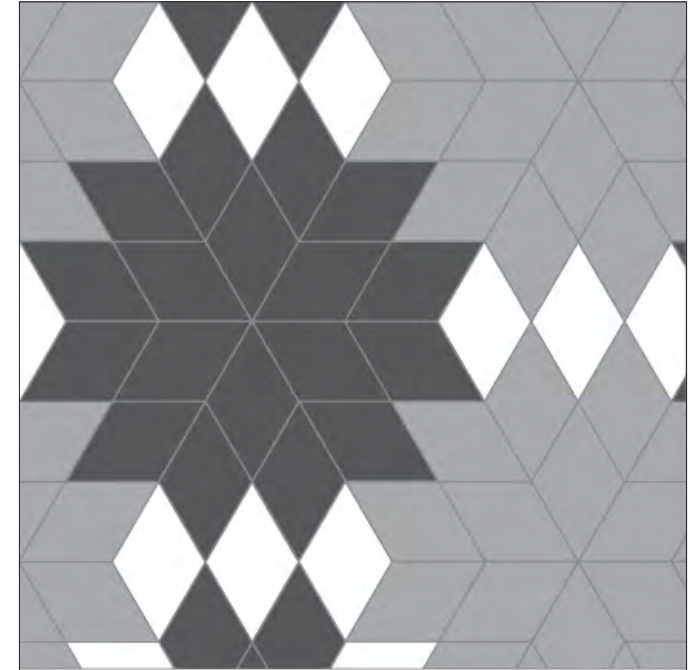
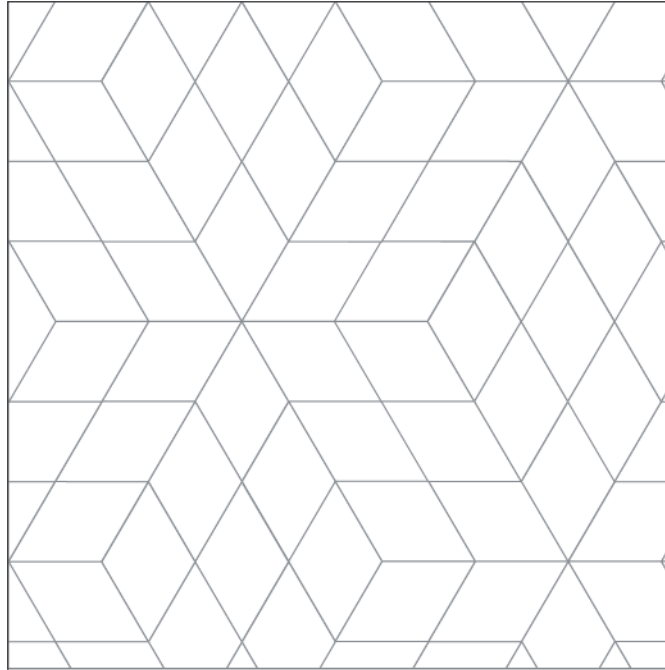
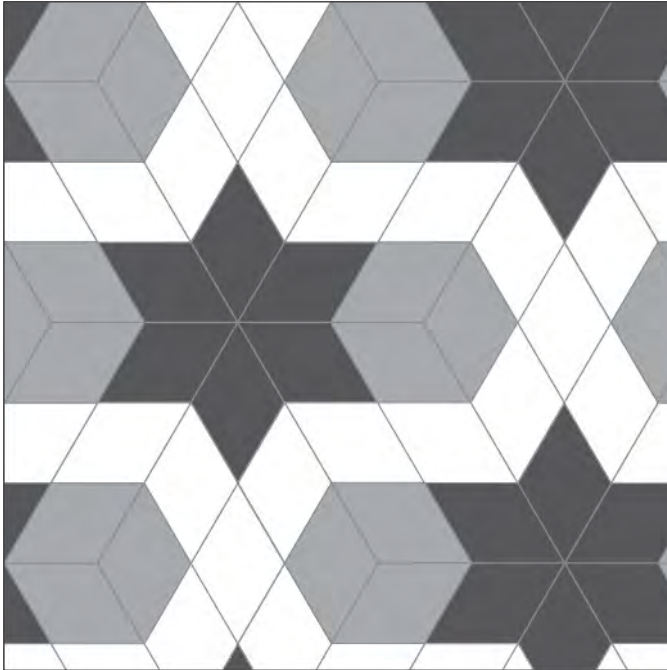
Blue Gloss



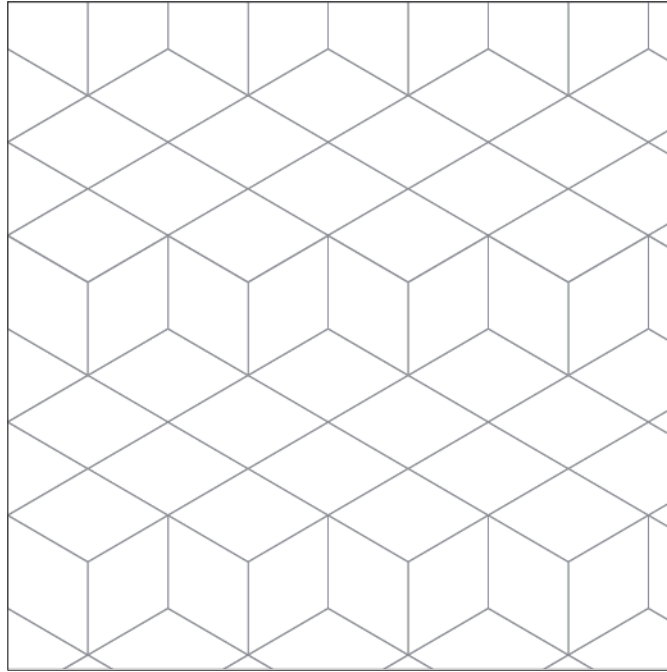
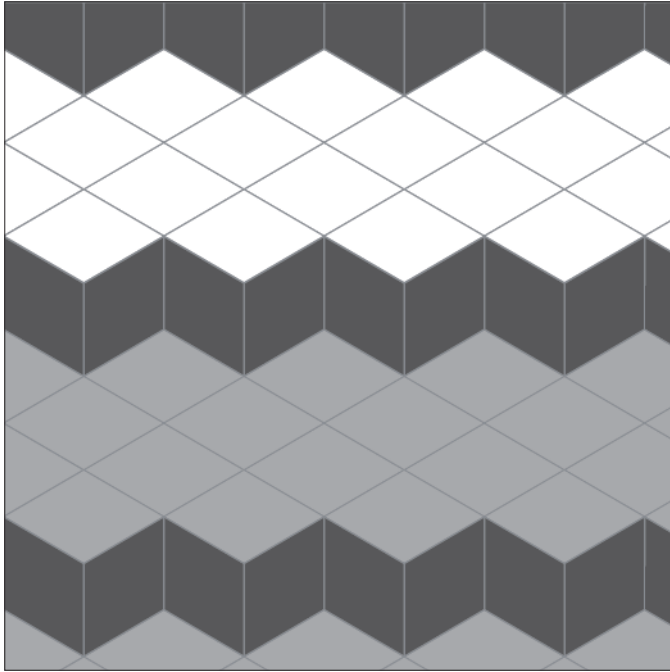
Black Gloss

LAYING PATTERNS AND SUGGESTIONS

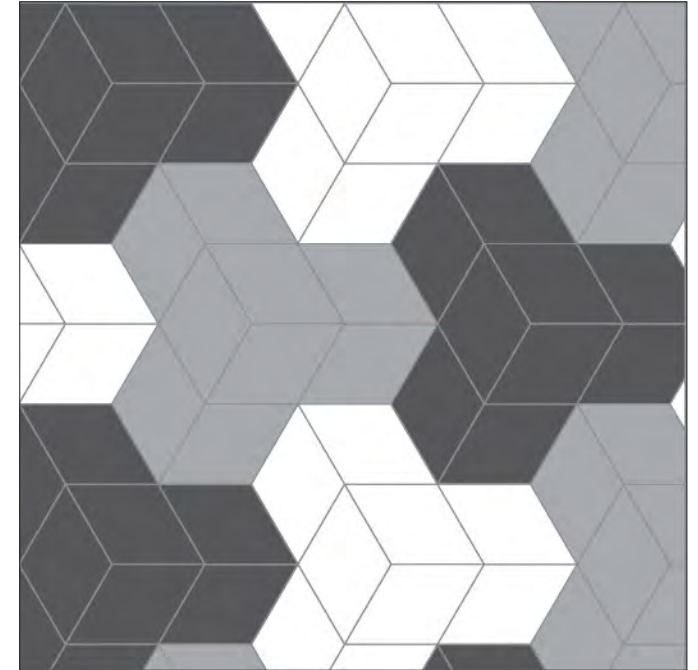
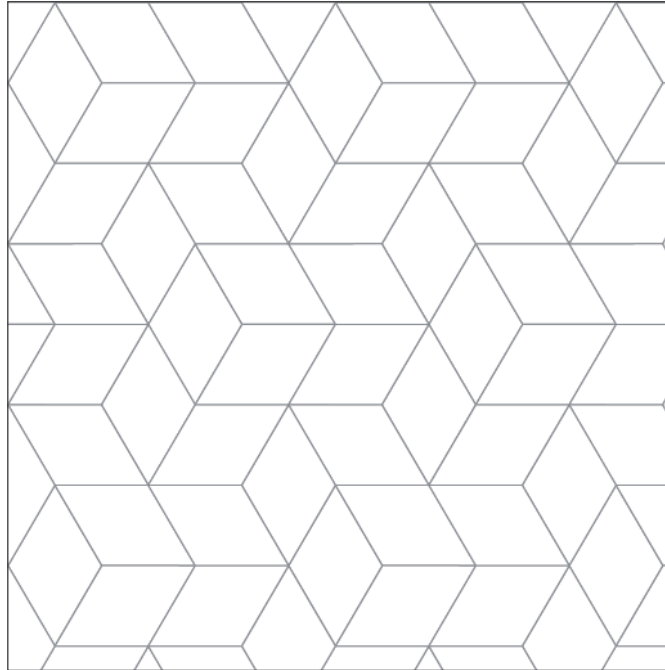
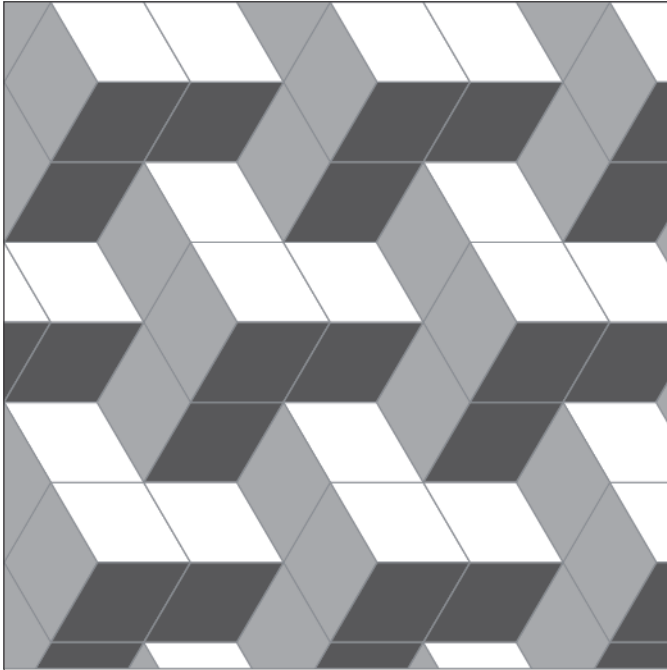
Diamond



Diamond



Diamond



Diamond

	technical characteristics	test method	value
	water absorption	iso 10545-3	>10%
	breaking strength	iso 10545-4	>600N
	thermal shock resistance	iso 10545-9	resistant
	chemical resistance	iso 10545-13	resistant
	surface abrasion	iso 10545-7	3