

Dolomite



Inspired by english limestone, DOLOMITE has minimal uniform movement and subtle shade variation in various tones of Greige.

PRODUCT TYPE: Vitrified glazed colour-bodied porcelain

COLOURS: Light Tan, Tan and Mink

SIZES: 300x600mm, 750x750mm, 750x1500mm
600x600mm and 1200x1200mm
Rectified edges

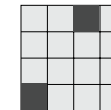
FINISHES/USAGE: Matt/Wall & floor

AESTHETIC QUALITIES: Soft and versatile tones

TECHNICAL INFO: P3 Pendulum Slip Rating (Matt)

ORIGIN: Italy

VARIATION:



V2

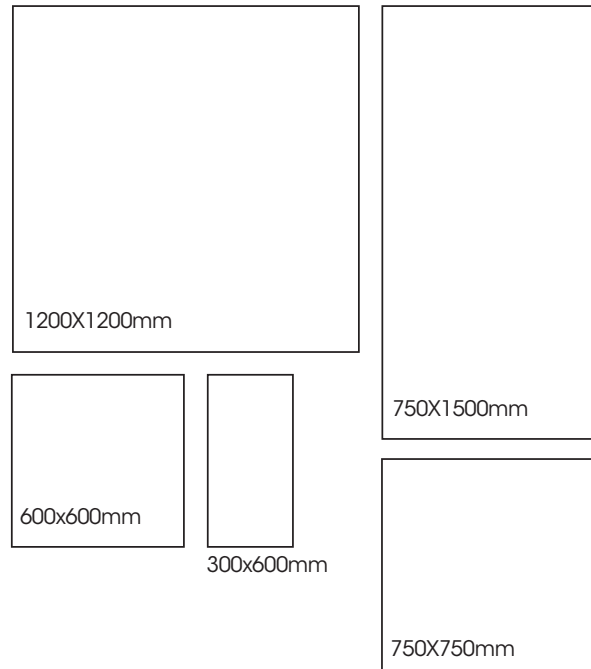
Dolomite

PRODUCT SPECIFICATIONS

SIZES	FINISHES	SLIP RATING	TILE EDGE
300x600mm	MATT	P3 PENDULUM	RECTIFIED
750x750mm	MATT	P3 PENDULUM	RECTIFIED
750x1500mm	MATT	P3 PENDULUM	RECTIFIED
600x600mm*	MATT	P3 PENDULUM	RECTIFIED
1200x1200mm*	MATT	P3 PENDULUM	RECTIFIED

* Indent item - Subject to stock availability overseas, please allow 10-12 weeks lead time from date of order confirmation. Minimum quantity may apply.

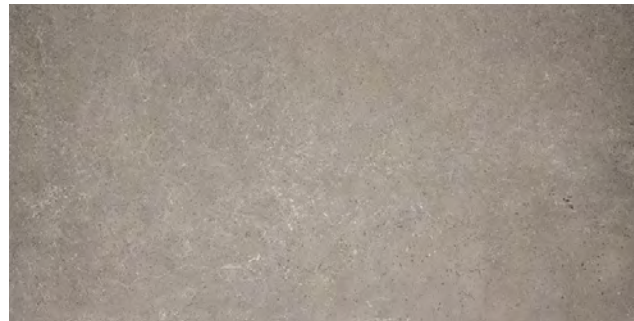
FORMATS



LIGHT TAN MATT



TAN MATT



MINK MATT

Dolomite



Dolomite

