

skheme®

cotto 2.0

cotto 2.0

Boasting a beautiful textured surface, Cotto 2.0 captures the warm variations of natural terracotta and is suitable for wall and floor applications. Available in contemporary sizes, this tile infuses spaces with sophisticated Mediterranean flair.



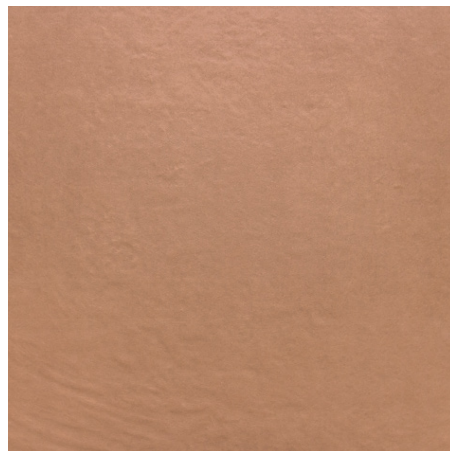
white matt



aldea matt



neutra matt



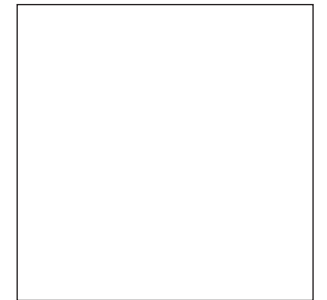
cuero matt



75x300mm



150x300mm



600x600mm



flame resistant

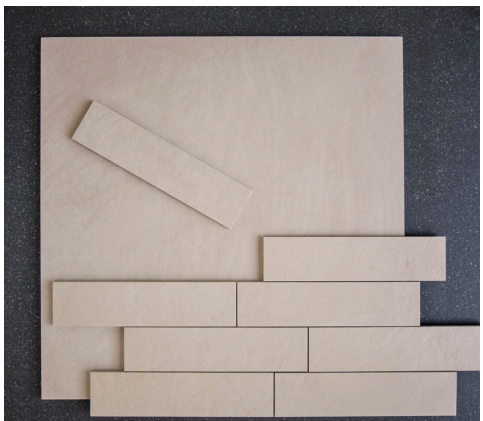
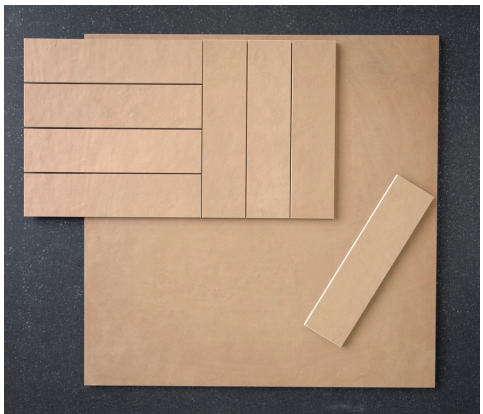
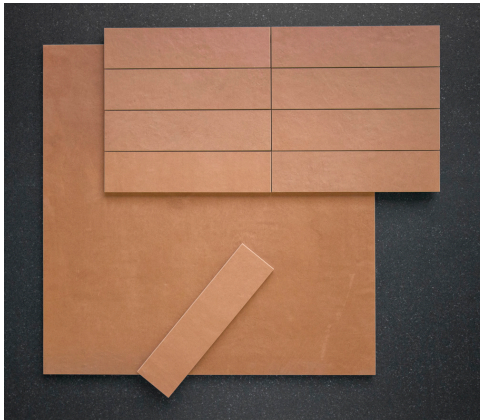


variation V2



slip rating P4

| | | | | |
|-------------|---------------------|------------------------------------|----------------------|------------------------------------------------------|
| DIMENSIONS | brick format | 75x300mm 150x300mm 600x600mm | matt matt matt | all colours neutra aldea cuero all colours |
| MATERIAL | | | | glazed porcelain |
| VARIATION | | | | V2 |
| TILE EDGE | | | | rectified |
| THICKNESS | | | tile | 10mm |
| SLIP RATING | | matt | P4 | indoor & outdoor |



Bricklays Pictured:
Top: Cuero
Middle: Aldea
Bottom: Neutra



technical data

| PROPERTIES | TEST METHOD | PRESCRIBED VALUES | VALUE |
|--------------------------|--------------|-------------------------------------|-----------|
| water absorption | ISO 10545-3 | ≤0.5% | ≤0.2% |
| bending strength | ISO 10545-4 | ≥ 35 N/ mm ² | compliant |
| thermal shock resistance | ISO 10545-9 | No sample must show visible defects | compliant |
| deep abrasion resistance | ISO 10545-6 | ≤ 175 mm ³ | compliant |
| resistance to chemicals | ISO 10545-13 | Declared value | compliant |
| resistance to frost | ISO 10545-12 | Resistant | compliant |
| resistance to staining | ISO 10545-14 | Minimum class 3 | compliant |
| surface quality | ISO 10545-2 | Complies with the standards | ≥ 95% |



Please note that all products must be fabricated using score & snap method and/or wet cutting in conjunction with AS/NZS 1716:2012, AS/NZS 1715:2009, AS/NZS 60335.2.69:2017. For more information please refer to: <https://www.safework.nsw.gov.au>

Variation is an inherent property of tiles and stone. Sizes are nominal and may include a joint.

A 2/12-14 Neild Avenue Rushcutters Bay NSW 2010 | P 02 8755 2300 | W www.skheme.com | E info@skheme.com