

Aria



PRODUCT TYPE: Glazed Porcelain

COLOURS: Ivory, Ash, Taupe and Deep Taupe

SIZES: 300x300mm 300x600mm and
600x600mm
Rectified edges

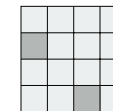
FINISHES/USAGE: Matt/Wall and Floor
Grip/Floor Only

AESTHETIC QUALITIES: Subtle movement and colour variation

TECHNICAL INFO: P3 Pendulum Slip rating/Matt
P5 Pendulum Slip rating/Grip

More technical data on last page

VARIATION:



V2



ARIA is a contemporary series that displays subtle movement and colour variation for a soft limestone look. Available in four colours and two finishes, ARIA is able to add extra design elements to any environment.

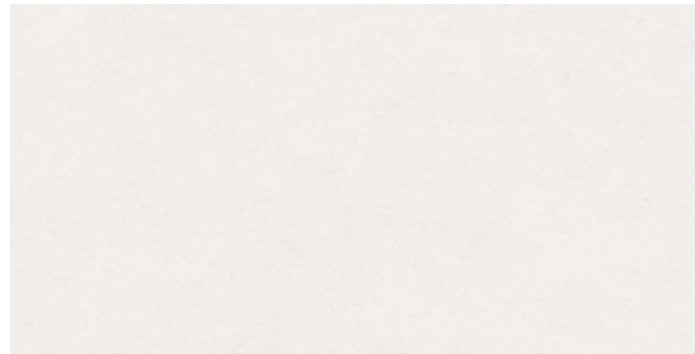
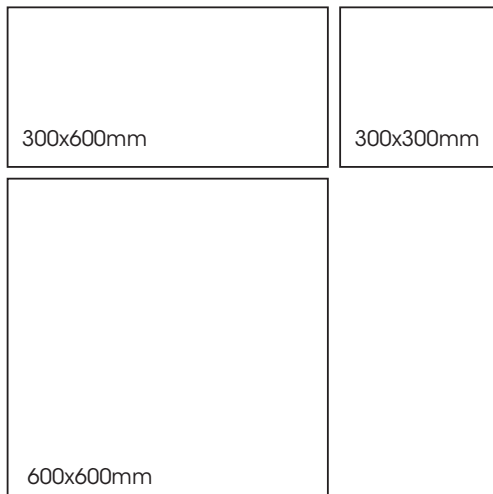
Aria

PRODUCT SPECIFICATIONS

SIZES	FINISHES	SLIP RATING	TILE EDGE
300x300mm	MATT	P3 Pendulum	RECTIFIED
300x600mm	MATT	P3 Pendulum	RECTIFIED
600x600mm	MATT	P3 Pendulum	RECTIFIED
300x600mm*	GRIP	P5 Pendulum	RECTIFIED

*Please note - Ivory is not available in the Grip finish

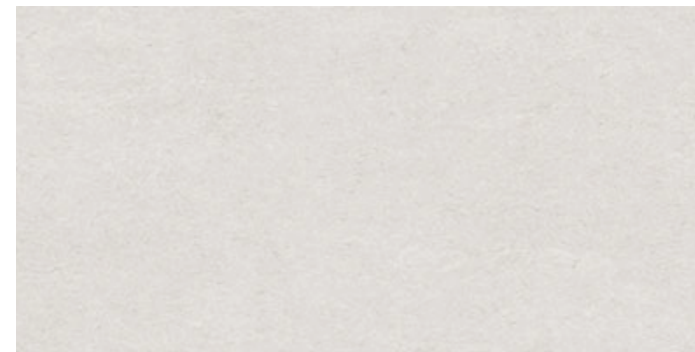
FORMATS



IVORY



TAUPE

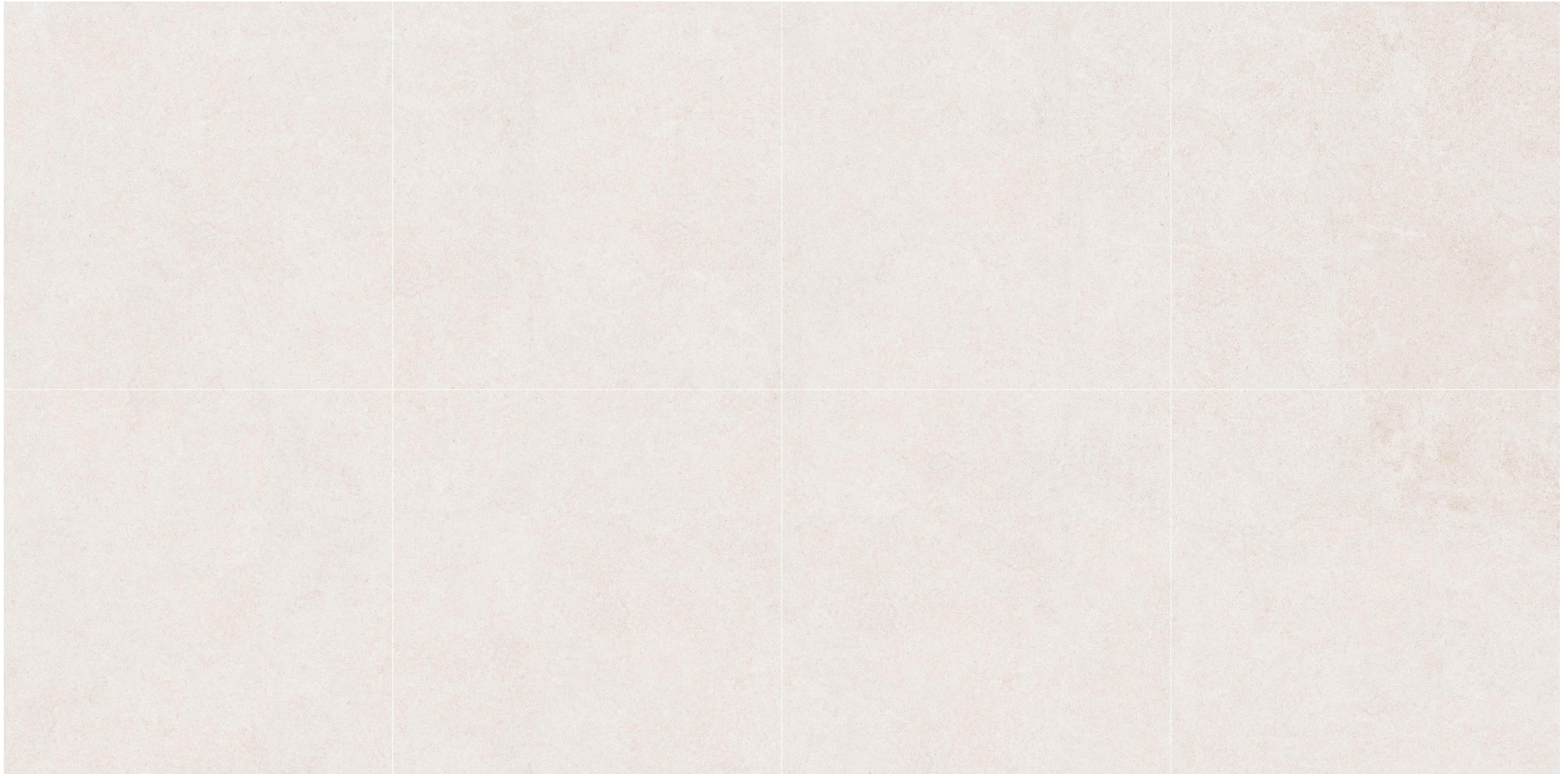


ASH

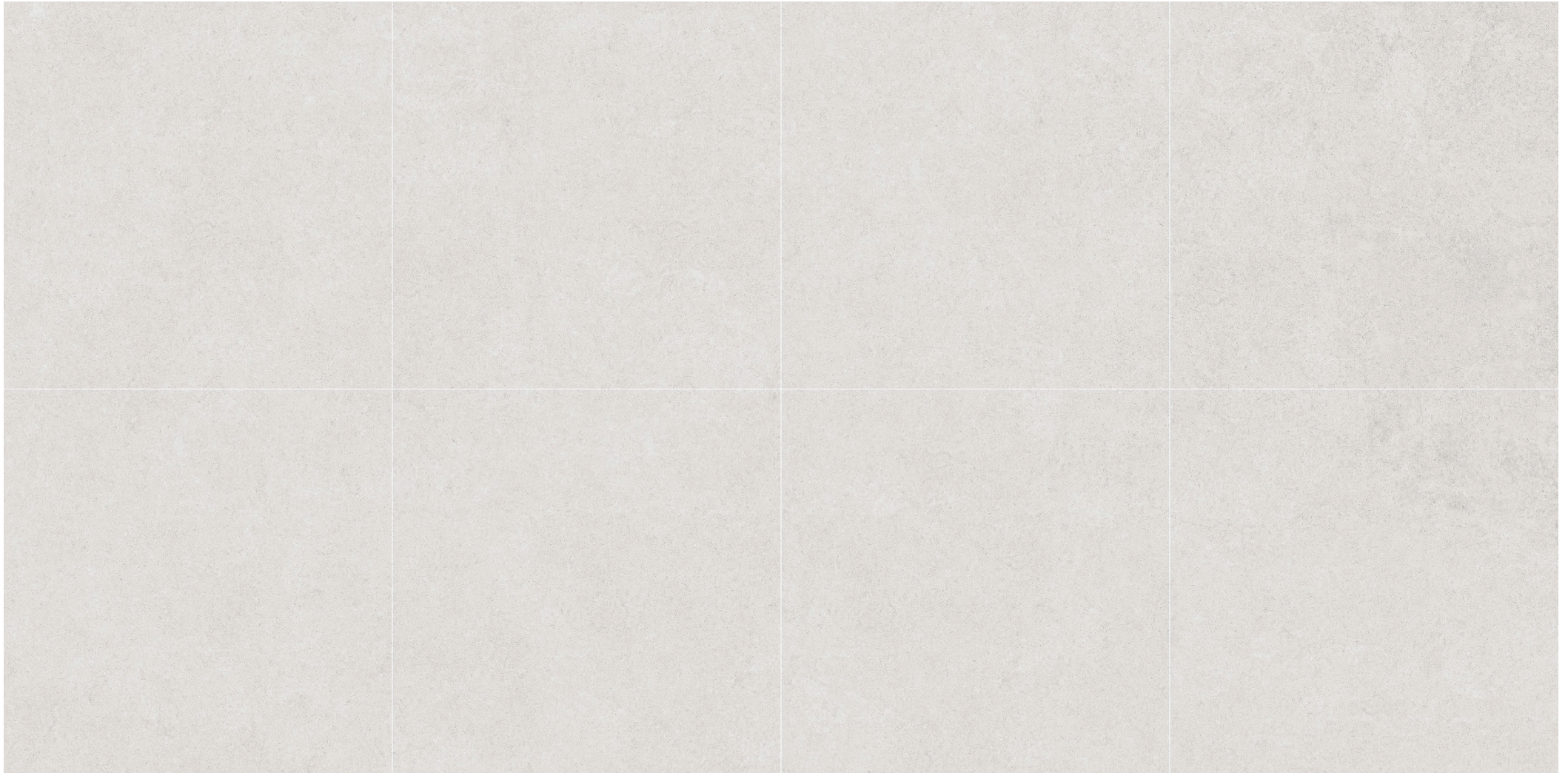


DEEP TAUPE

IVORY VARIATION



ASH VARIATION



TAUPE VARIATION



DEEP TAUPE VARIATION



Aria



Aria



Aria



TECHNICAL DATA

Technical Characteristic	Test Method	Requirement	Result
Surface quality	ISO 10545-2	95%	100%
Length and Width	ISO 10545-2	± 0,6%	0.5%
Thickness	ISO 10545-2	± 0,5	± 0,5
Straightness of sides	ISO 10545-2	± 0,5%	± 0,3%
Water Absorbtion	ISO 10545-3	≤ 3%	≤ 3%
Modulus of Rupture	ISO 10545-4	≥ 35	≥ 38
Breaking Strength	ISO 10545-4	≥ 1100	≥ 1300
Crazing Resistance	ISO 10545-11	Pass	Resistant
Chemical Resistance	ISO 10545-13	Declared Value	ULA / UHB
Stain Resistance	ISO 10545-14	Minimum Class 3	Class 5

CERTIFICATIONS



ISO 14001:2015 specifies the requirements for an environmental management system that an organization can use to enhance its environmental performance. ISO 14001:2015 is intended for use by an organization seeking to manage its environmental responsibilities in a systematic manner that contributes to the environmental pillar of sustainability.